

North Georgia Growth Fund I

#7 Hwy 53/Road Atlanta Hall County



- 19 +/- acres for Commercial and Industrial
- Dual road frontage
- Flat
- Highway expansion

Comments:

Located in Hall County, this tract is directly across from Road Atlanta and adjacent to Lanier Speedway. Ideal for commercial or industrial automotive office. Well traveled highway.

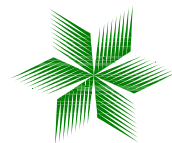
Driving Directions: From Gainesville, Go South on Hwy 985 to exit 16. Take left on Hwy 53 towards Winder. Property is on the left approximately 6.5 miles It begins, just Past Lanier Speedway at the creek and continues to Benefield Rd.

North Georgia Growth Fund I

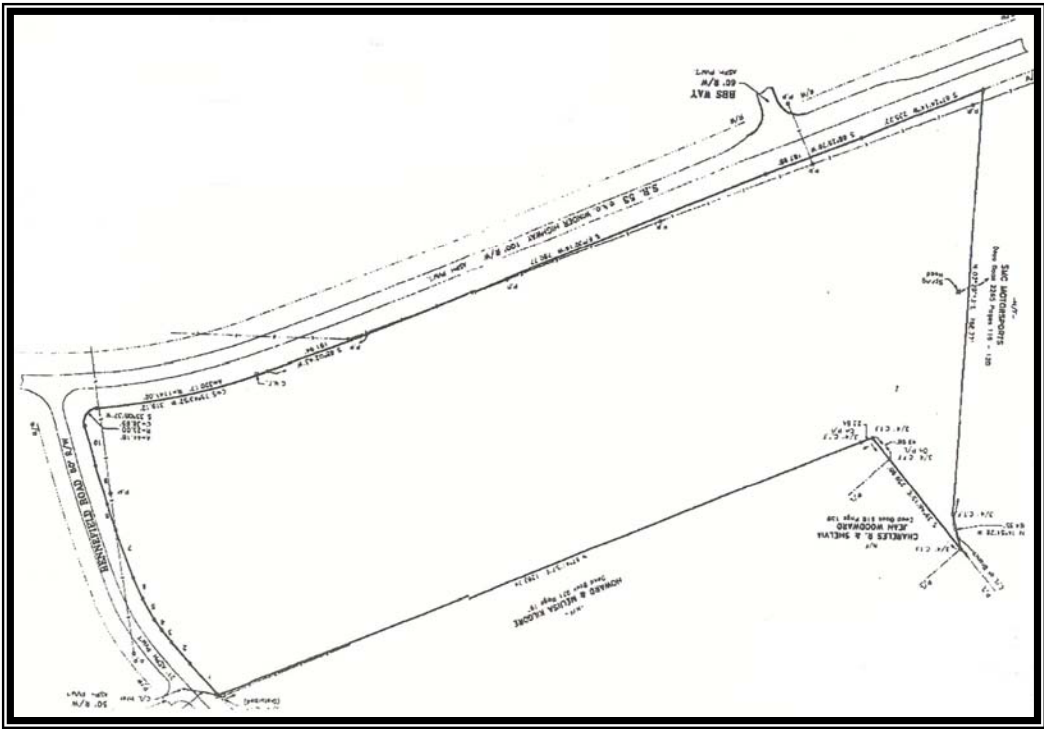
Southern Capital Fund
434 Green St
Gainesville, GA 30501

For more information:
Matt McCord
770.718.5102
mmccord@nortonnorthga.com

FOR INVESTOR USE ONLY



SOUTHERN CAPITAL FUND



SOUTHERN CAPITAL FUND